

FLORIANA

ENTRY CONCEPT



CONCEPT SKETCHES



SWATCHES AND TESTING



PROTOTYPE

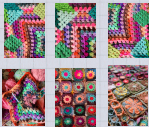


The headpiece is a outward representation of my crazy neurodivergent brain

exaggerated silhouette extending the body



traditional crochet presented in a way that no one has seen
nostalgia and avant-garde meet and have a party



high contrast



unexpected textures



headpiece

creating a new face silhouette with dramatic ruffles

layered ruffles & netting

neutral base
colorful adornments